

# For Sale 7,947 SF on 1.36 Acres

**Perfect Contractor's Yard  
Huge Concrete Fenced Yard**



**14945 La Palma Drive, Chino, CA**

## Features:

- Freestanding Building
- 59,148 SF Lot (1.36 Acres)
- 3,000 SF Office Area
- Seller will lease-back a portion of the building and yard area
- Built 2001
- Two (2) Oversized Ground Level Doors
- 17' Clear Height
- Fully Fire Sprinklered
- Corner Lot
- 800 Amps / 277-480 Volt 3P/4W (verify)
- Excellent Contractor's Yard
- 100% Concrete Yard / Secured and Fenced
- Building Occupied / Call to Show



**Chris Migliori** | (714) 385-1801 x-3020 | [chris.migliori@daumcommercial.com](mailto:chris.migliori@daumcommercial.com)

**DAUM** D/AQ Corp. #01129558

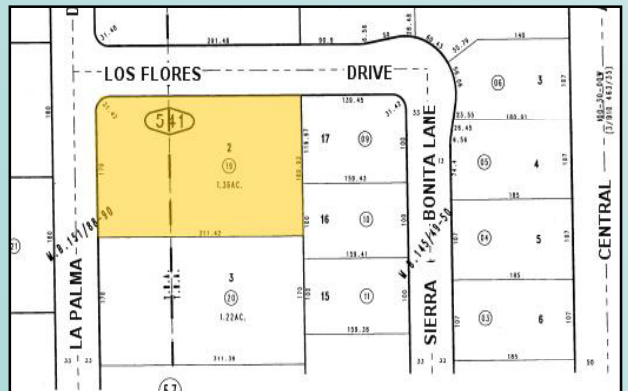
CA License #00972843


ONCOR International

Although all information is furnished regarding for sale, rental or financing is from sources deemed reliable, such information has not been verified and no express representation is made nor is any to be implied as to the accuracy thereof, and it is submitted subject to errors, omissions, changes of price, rental or other conditions, prior sale, lease or financing, or withdrawal without notice.

# For Sale

# 7,947 SF on 1.36 Acres



Chris Migliori  | (714) 385-1801 x-3020 | [chris.migliori@daumcommercial.com](mailto:chris.migliori@daumcommercial.com)

 D/AQ Corp. #01129558

CA License #00972843

ONCOR International

Although all information is furnished regarding for sale, rental or financing is from sources deemed reliable, such information has not been verified and no express representation is made nor is any to be implied as to the accuracy thereof, and it is submitted subject to errors, omissions, changes of price, rental or other conditions, prior sale, lease or financing, or withdrawal without notice.