

FOR LEASE

18,000 SF

Massive Concrete Yard



1603 – 1605 N. O'Donnell Way, Orange, CA

Features:

- High Image Executive Office Area
- 1.94 Acre Lot
- 5,617 SF Office Space
- Five (5) GL Doors
- Divisible to 9,000 SF
- 1,148 SF Conference Room (2nd Story)
- Fully Sprinklered
- 20' Warehouse Clearance
- 8:1 Car Parking
- 800 Amps (verify)
- Edison Easement
- Concrete Yard (est. 50,000 SF)
- Drive Around Building
- Excellent Freeway Access (57,91,5,55 & 22)
- Call to Show



For additional information, please contact:

Chris Migliori - chris.migliori@gvadaum.com - p: 714.385.1801

2300 E. Katella Avenue, #100, Anaheim, CA 92806

www.gvadaum.com f: 714.385.1975



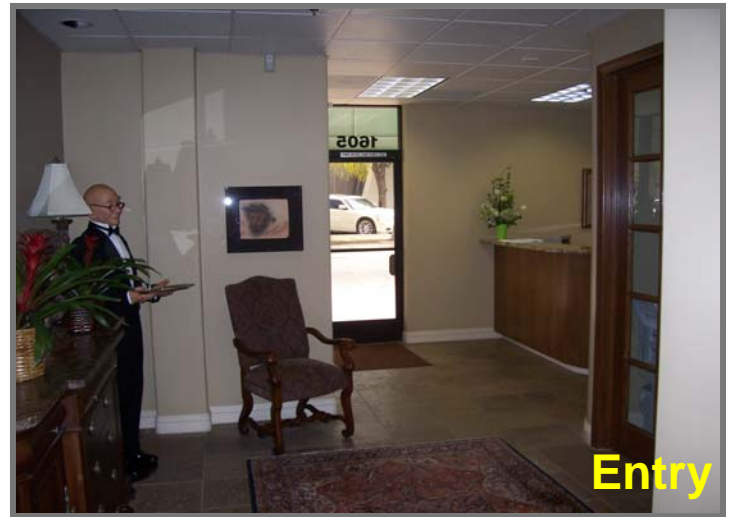
Although all information is furnished regarding for sale, rental or financing is from sources deemed reliable, such information has not been verified and no express representation is made nor is any to be implied as to the accuracy thereof, and it is submitted subject to errors, omissions, changes of price, rental or other conditions, prior sale, lease or financing, or withdrawal without notice.

FOR LEASE

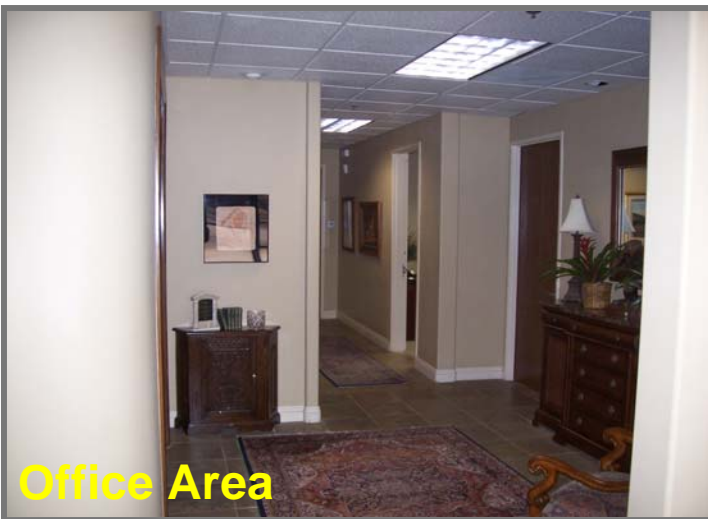
18,000 SF



Front



Entry



Office Area



Plan Room



Conference Room



Yard

For additional information, please contact:

Chris Migliori - chris.migliori@gvadaum.com - p: 714.385.1801

2300 E. Katella Avenue, #100, Anaheim, CA 92806

www.gvadaum.com f: 714.385.1975



Although all information is furnished regarding for sale, rental or financing is from sources deemed reliable, such information has not been verified and no express representation is made nor is any to be implied as to the accuracy thereof, and it is submitted subject to errors, omissions, changes of price, rental or other conditions, prior sale, lease or financing, or withdrawal without notice.