

FOR SALE

16,965 SF

Major Street Frontage



4431 E. La Palma Avenue | Anaheim, CA

(Lakeview & La Palma)

- Major Street Frontage
- 2,000 SF of Executive Office Space
- Drive Around Building
- Six (6) Ground Level Doors
- 1.06 Acre Parcel
- Divisible
- 17' Warehouse Clearance
- 3,000 Amps, 277/480 Volt (verify)
- 2:1 Car Parked
- Electrical Distribution Throughout
- Four (4) Restrooms
- Excellent Freeway Access (57, 91, 55)
- Adjacent Building Available for Sale



DAUM
COMMERCIAL REAL ESTATE SERVICES

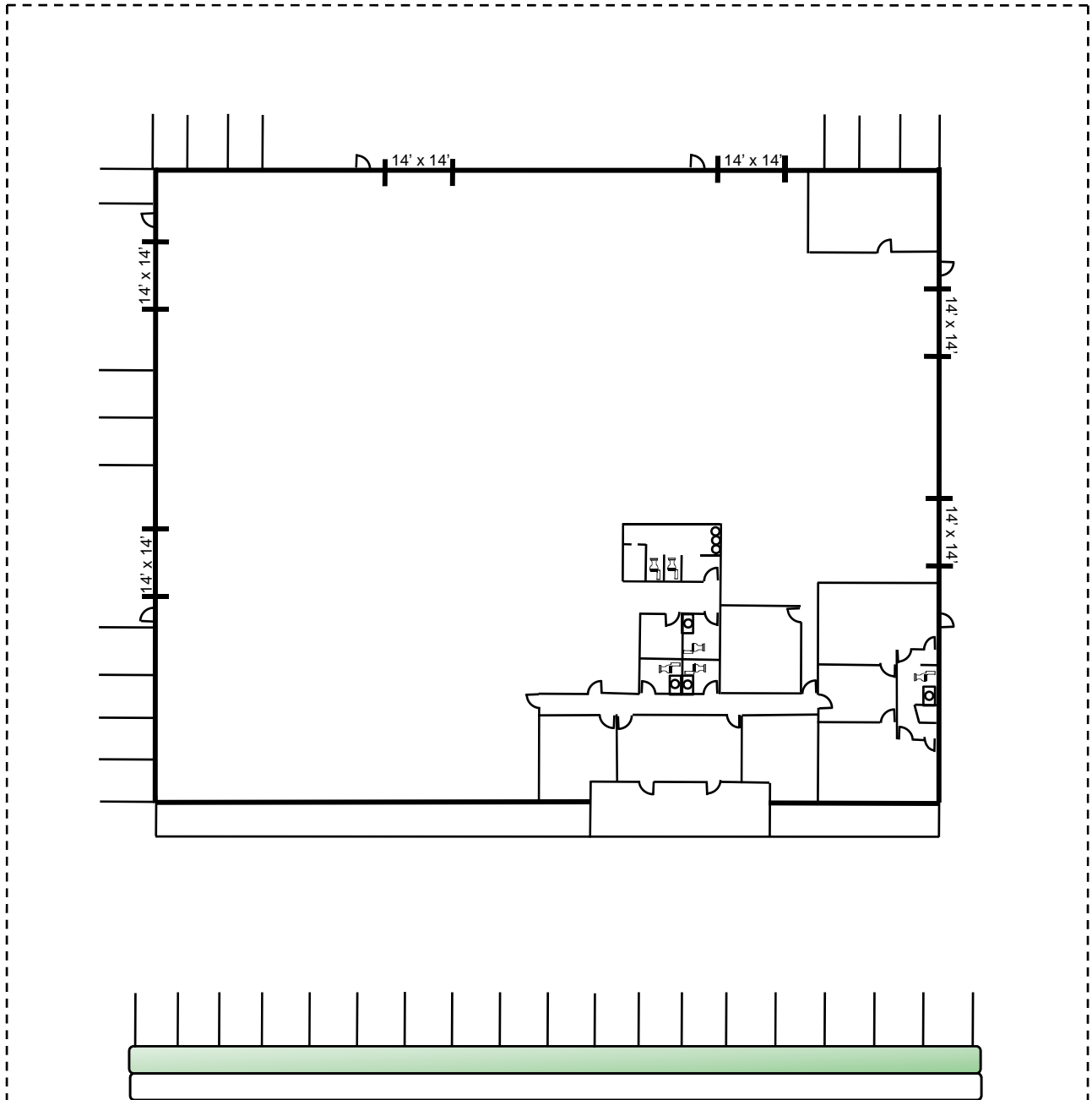
For additional information, please contact:

Chris Migliori | p: 714.385.1801

Although all information is furnished regarding for sale, rental or financing is from sources deemed reliable, such information has not been verified and no express representation is made nor is any to be implied as to the accuracy thereof, and it is submitted subject to errors, omissions, changes of price, rental or other conditions, prior sale, lease or financing, or withdrawal without notice.

FOR SALE

16,965 SF



La Palma Avenue



For additional information, please contact:

Chris Migliori  | p: 714.385.1801

Although all information is furnished regarding for sale, rental or financing is from sources deemed reliable, such information has not been verified and no express representation is made nor is any to be implied as to the accuracy thereof, and it is submitted subject to errors, omissions, changes of price, rental or other conditions, prior sale, lease or financing, or withdrawal without notice.